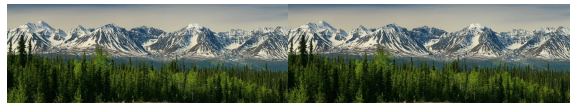


History

The Edo peoples settled in the rainforests of West Africa and built a wealthy successful empire known as the Benin Kingdom. Leaders losing control of the Edo people led to the Kingdom's downfall. In the 1600s the British Army invaded and the Benin Kingdom became part of the British Empire.

During this term, students will learn about the Benin Kingdom beginning in the 900s.

During this unit, Year 5 will devise questions, make comparisons between aspects of periods of history and the present day and construct informed responses that involve thoughtful selection of relevant historical information.



Geography

During this unit students will explore weather conditions and patterns around the world as they widen their understanding of a range of geographical terms including climate zones, biomes, vegetation belts, rivers, mountains, volcanoes and earthquakes. Students will build upon prior locational knowledge, particularly through the use of maps, globes and atlases as we learn to identify the position and significance of geographical features (e.g. latitude, longitude, time zones).

Maths

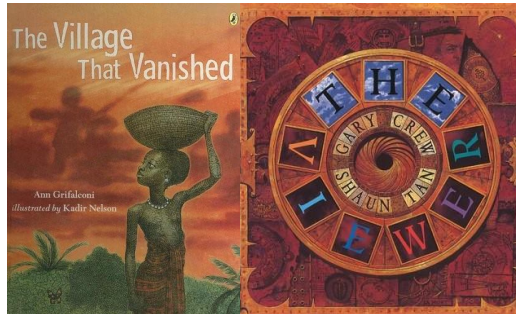
Students will learn about decimals, geometry (properties of shapes, position and direction) and measure (converting units, volume and capacity).

Computing

During this term students will develop their understanding data and information.

English

During this unit, students will learn how to develop creative responses to text and investigate how illustrations influence a reader's experience of the text. Students will consolidate their learning by producing imaginative and creative writing outcomes.



Art

Use a range of materials and techniques to create sculptures inspired by the Benin Kingdom. Students will explain and discuss the materials and the techniques they use. Develop skills in using clay including slabs, coils and slips.

Religious Education



This term students will develop a deeper awareness of serving, forgiveness and our world.

Science

Year 5 during the unit 'The Circle of Life' investigating living things and their habitats will recognize that living things have changed over time and that fossils provide information about living things that inhabited the earth millions of years ago. Additionally, students will describe the life processes of reproduction in some plants and animals and understand that living things produce offspring of the same 'kind' but that are not identical to their parents. This will be followed by explorations of the differences in the life cycles of plants, mammals, amphibians, insects and birds.

The second part of this term will look at growing up and growing old! Year 5 will investigate the stages of human development, identifying key changes that take place in old age.

